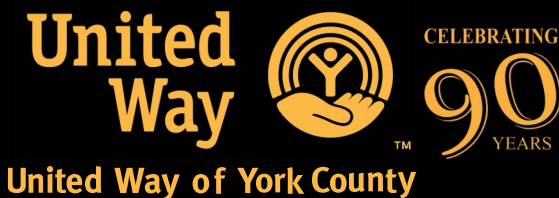
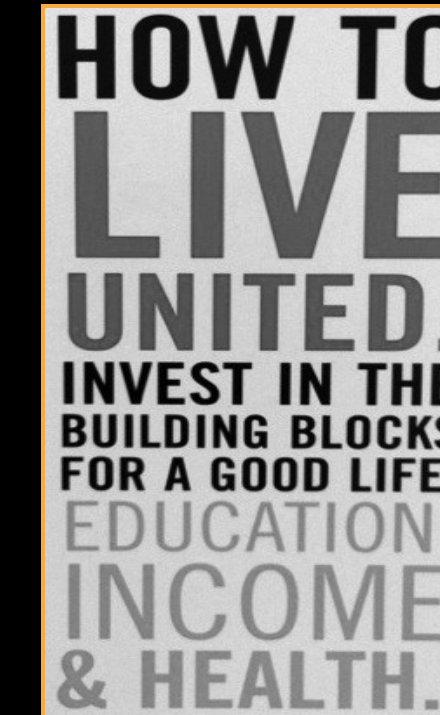
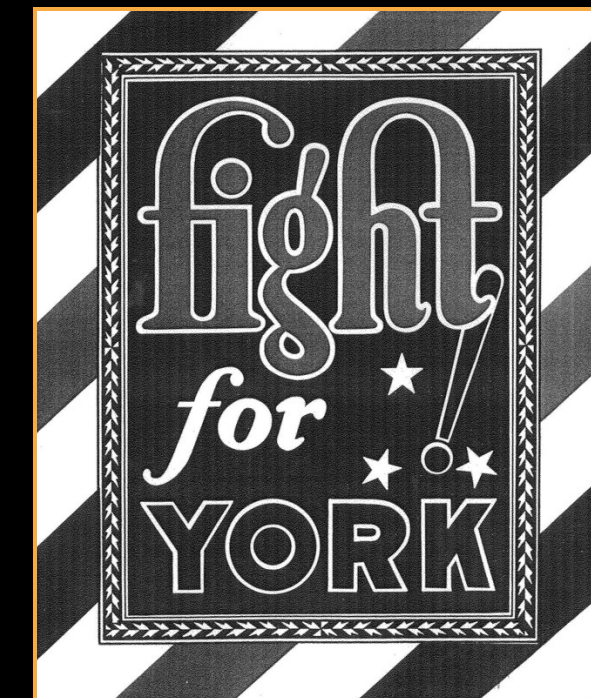
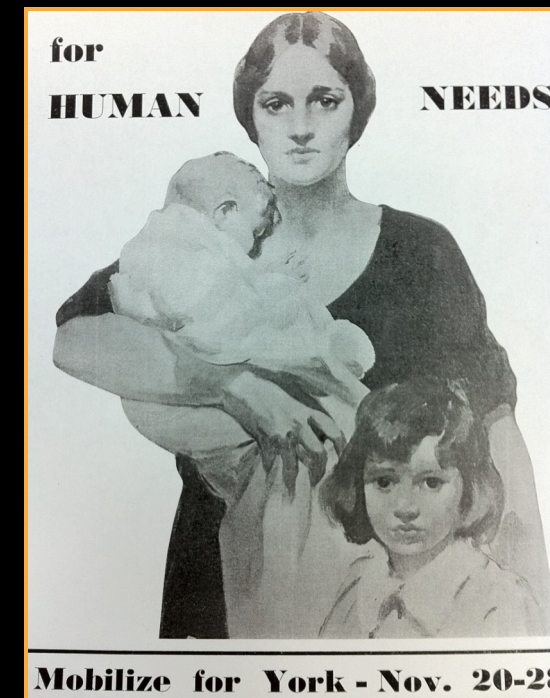


BOARD CHAIRS

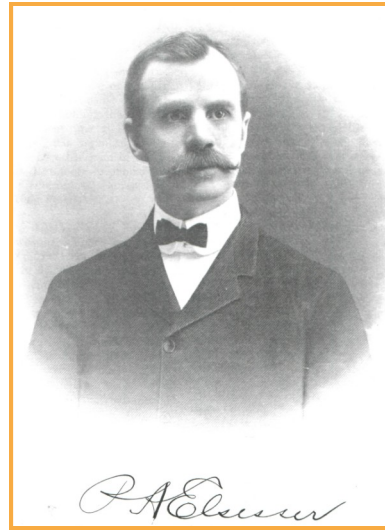
P.A. Elsesser	1921	Ben Lavetan	1955	Albert L. Hydeman, Jr.	1989
P.A. Elsesser	1922	Basil A. Shorb	1956	Thomas W. Wolf	1990
P.A. Elsesser	1923	William Eyster	1957	John J. Shorb	1991
P.A. Elsesser	1924	Ray S. Noonan	1958	Richard H. Brown	1992
P.A. Elsesser	1925	Benjamin M. Root	1959	Barbara Prendergast	1993
P.A. Elsesser	1926	Stewart E. Lauer	1960	Donald B. Dellinger Jr.	1994
P.A. Elsesser	1927	William T. Wolf	1961	Anne W. Kinsley	1995
Walter S. Bond	1928	William T. Wolf	1962	Larry J. Miller	1996
Walter S. Bond	1929	Donn I. Cohen	1963	Donald A. Gogniat	1997
Walter S. Bond	1930	Emanuel A. Cassimatis	1964	J. Bradley Scovill	1998
B.T. Root	1931	Emanuel A. Cassimatis	1965	Ryan Sattler	1999
B.T. Root	1932	Dr. George D. Weaver	1966	David Kennedy	2000
B.T. Root	1933	Robert Erdos	1967	Anthony P. Campisi	2001
B.T. Root	1934	Charles E. Lehman	1968	Anthony P. Campisi	2002
George S. Schmidt, Jr.	1935	Charles E. Lehman	1969	Sally Dixon	2003
Mrs. William McClellan	1936	Judge George W. Atkins	1970	Michael Kochenour	2004
Mrs. William McClellan	1937	Walter Creitz	1971	Michael Kochenour	2005
B.T. Root	1938	Henry B. Leader	1972	Patrick Ball	2006
Fred A. Hespenheide	1939	Mrs. William T. Wolf	1973	Patrick Ball	2007
B. R. Moore	1940	Edward A. Elias	1974	Michael Hady	2008
Frank W. Trout	1941	Edward A. Elias	1975	Michael Hady	2009
Ralph F. Fisher	1942	Marvin W. Simkins	1976	Mathew Smith	2010
Ralph F. Fisher	1943	Marvin W. Simkins	1977	Mathew Smith	2011
R. J. Thompson	1944	James F. Donahue	1978		
Albert T. Morris	1945	Charles H. Falker	1979		
Edward H. Fisher	1946	Lorraine Hovis	1980		
Fred M. Downey	1947	Lorraine Hovis	1981		
Fred M. Downey	1948	Dale Kohler	1982		
John W. Hennessey	1949	Dale Kohler	1983		
John W. Hennessey	1950	Richard Hupper	1984		
John Thomas	1951	Richard Hupper	1985		
John Thomas	1952	Fred Rosenmiller	1986		
Albert D. Keller	1953	Fred Rosenmiller	1987		
Albert D. Keller	1954	Albert L. Hydeman, Jr.	1988		



United Way of York County

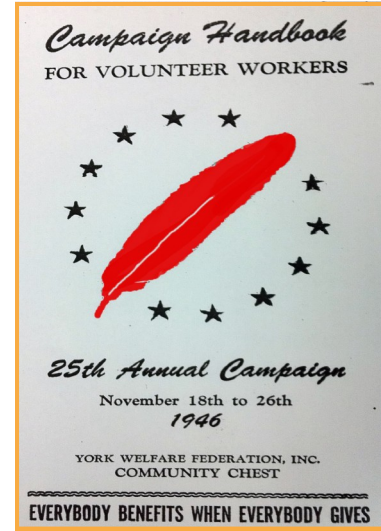


Celebrating 90 Years

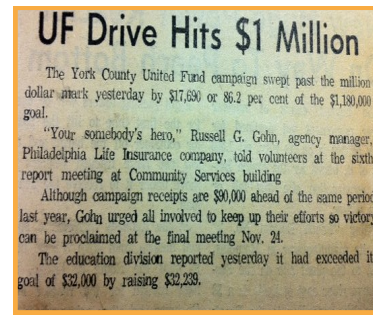


Mrs. William S. McClellan becomes the first woman to chair the Board and the Federation meets its goal for the first time since 1932.

Federation leases old High School at 134 W. Philadelphia St. to consolidate agency services under one roof.

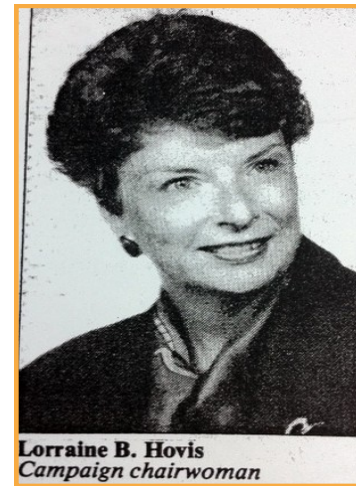


The first United Fund drive was conducted. Raised funds for 6 Hanover agencies and the 19 "Community Chest" organizations.



United Community Services building dedicated at 800 East King St.

Cornelia Wolf succeeds Henry Leader as Chair and leads the move to rename the organization the United Way of York County.



Robert Pullo chairs the first campaign to raise over \$4 million, a 15% increase over the prior year, and the largest % increase of Metro 2 United Ways in the country.

United Way of York County, York County Community Foundation & Penn State –York form the Focus On Our Future Commission to improve the quality, affordability and accessibility of early childhood education.



Robert and Donna Pullo

United Way moves to a multi-year funding system for partner agency programs.

In its 90 years, the United Way campaign has raised **\$188,922,602.**

1920's

1930's

1940's

1950's

1960's

1970's

1980's

1990's

2000's

Present

York Welfare Federation founded. P.A. Elsesser is named chairman and William Crozier is hired as executive director.

Francis Farquhar chairs the first community campaign and raises \$73,679

Board decides a "company" campaign will be used to raise funds instead of door-to-door mail solicitation.

17 agencies receive funding to offset "operating deficits" as determined by the Board's Budget Committee.

E. A. Hirschmann is named Executive Director, a position he will hold for 23 years. His primary employment was with the York County Chamber of Commerce.



Mrs. William S. McClellan

Federation runs first USO campaign and raises \$15,000 for the "government program of recreation for the boys in military camps."

Federation votes to add two delegates, one each from the American Federation of Labor (AFL) and Congress of Industrial Unions (CIO). Fred Lanus and Ralph Knaub are named.

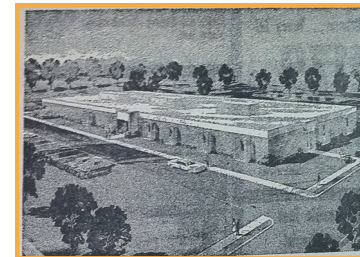
Federation voted to create a new organization, The York County War and Welfare Fund, to run a "United Fund" campaign for agencies and war efforts. The Welfare Federation will participate in the campaign but remain intact.

United Way of America establishes formal relationship with the AFL and the CIO.



York County Council of Community Services, Inc. and the United Fund merge into one organization for community planning and fundraising named United Community Services.

United Fund campaign, chaired by Charles Lehman, raises over \$1,000,000 for the first time.



F.I.R.S.T. is started by United Way to provide information and referral services to residents of York County.

United Way raises over \$3 million in a campaign chaired by Tom Wolf.

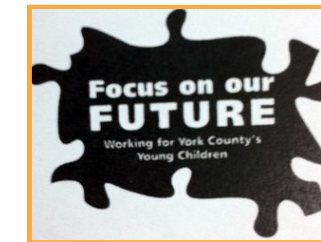
Arthur Glatfelter & John Schmidt establish Tocqueville Society of York.

Lorraine Hovis becomes the first woman to chair the United Way campaign.

United Way creates an endowment fund at the York County Community Foundation.

Kinsley Construction staff built a playground on the United Way property for the use of neighborhood children.

United Way revises its funding process to fund program services of agencies, not agency operations.



Robert and Donna Pullo pledge an endowment fund of \$1 million to United Way.

The first "Day of Caring" takes place.

United Way's Board of Directors adopts priorities in Education, Income and Health with specific outcomes for funded programs.



Allocations Panel